

<u>DIVIDER</u>	<u>DESCRIPTION</u>	<u>PART LIST</u>	<u>DRAWING</u>
A	FOUNDATION & OUTLINE		A-92312
B	PNEUMATIC EQUIPMENT & CIRCUIT		L-103386 A-102130
C	ELECTRIC CIRCUIT		L-102613 L-102871 L-102872 L-102817
D	HYDRAULIC POWER UNIT AND HYDRAULIC CIRCUIT	4A-1-P	L-91876 L-91877 L-91878 L-91879 L-98201 L-101483 L-101484 L-100758
E	BED, PAN AND LEGS	4A-2-P	L-91882 L-91883 L-91983 L-97532 L-97533
F	HEAD, SECTION THRU GEARS AND HOUSING PIPING	4A-3-P	L-90558 A-101487
G	SPINDLE - 2" CAPACITY	4A-4-P	L-91880
H	COLLET CHUCK - 2" CAPACITY	4A-5-P	L-100962
I	TURRET & SADDLE	4A-6-P	L-91874 L-91875 L-101454 L-101455 L-101456 L-101457
J	RECIPROFEED	4A-7-P	L-101458
K	CROSS SLIDE & SADDLE	4A-8-P	L-94185 L-100930 L-101370 L-101371 L-101372
L	COOLANT PUMP	4A-9-P	L-98129
M	AUTOMATIC LUBE	4A-10-P	L-94392 L-88536

INDEX

N	CONSOLE	4A-11-P	L-98790 L-102813 L-103266
O	MOTOR DRIVE	4A-13-P	L-91868
P	VERTICAL SLIDE	4A-14-P	L-100889 L-100890
Q	LIPE BAR FEED	4A-15-P	A-84535 A-102246
R	TACH GENERATOR	4A-18-P	A-97190 A-98663 A-98684
S	TOOLING		A-93747 A-104190
T	SPINDLE NOSE		A-100937

INDEX

No. 4 ATL - HYD. POWER UNIT (Ref. P/L #9241)

Tank	L-92114	End cover gasket (left)	B-92238
Drain manifold	A-91997	Construction	L-91876
Console lift bracket	A-95268	Construction	L-91877
Manifold	L-91351	Construction	L-91878
Pump base (4)	A-92005	Construction	L-91879
Filler block	A-94373	Const. TS & CS manifold	L-91352
Cover (2)	A-92074	Const. hyd. fd. cont. panel	L-92058
Cover gasket (2)	A-92075	Hyd. circuit diag.	L-97822
Top cover	B-93948	Block gasket	B-94374
Top cover gasket	B-93949	Continental flow control	
F.C.V. subplate	B-96963	valve - #N105-33-A	B-91348
Guard	B-92067	Rexroth F.C.V. 1.6 GPM Max.	
Guard (3)	B-92068	No. 2 FRM 5 - 31/6QV AS 162 (9)	B-97422
Bottom guard	B-92069	Pall-press. line filter	
Bottom guard (3)	B-92070	3 Micron element (3)	B-91395
Drain gasket	B-92077	Westinghouse 3 HP motor,	
End cover gasket (right)	B-93777	1800 RPM, TEFC frame 182T	
Pump base shim (16)	B-92105	3 phase, 60 cycle 230/460V	B-90265
Gasket (2)	B-58660	Air maze A-14132 breather	B-90291
Gasket cap (2)	B-58655		
End cover (right)	B-93776		
End cover (left)	B-92237		

Bardons & Oliver, Inc. - Cleveland, Ohio U.S.A.

4A-1-P

LOT 379 R

ATL HYD. POWER UNIT (Ref. P/L #9242)

Guard		L-87126	Sun press. reducing valve	B-91276
Head manifold		L-87256	Mana. relief valve	B-91277
C.S. & O.H.S. manifold		A-87128	Mana. feed control valve	B-91337
Turret slide manifold		A-87129	Mana. needle & shut-off	B-91338
Check valve body	(8)	A-92041	valve with mtg. kit	(2) B-91349
O.H.S. subplate		A-92054	Cont. press. comp. hyd. pump	(3) B-91345
Spring	(8)	B-46767	Cont. air pilot valve	(3) B-91347
Washer	(8)	B-96785	Cont. mounting bolt kit	B-91491
Piston shaft	(8)	B-87132	Cont. air pilot valve	(7) B-91187
'O' ring cap	(8)	B-87134	Sun. relief valve	B-97823
Piston	(8)	B-87135	Synclinal sump. type filter	(4) B-91330
Piston cap	(8)	B-87136	Fed. Br. breather cap assm.	B-85942
Manifold		B-88724	Cent. Det. fluid level gauge	B-85939
Manifold bracket		B-88725	with fahrenheit scale	B-91336
Bracket		B-89092	Marsh pressure gauge	(2) B-84303
			Can-flo pressure gauge	B-96605
			Can-flo pressure gauge	(3) B-98143
Woods Sure-Flex coupling	(4)	B-91468	G.E. calrod immersion heater	(2) B-91466
Woods Sure-Flex coupling	(5)	B-91469	Powers Reg. 50 - 130 F.	B-91713
Woods Sure-Flex coupling		B-91532	thermostat range with closed	B-91714
Mana. needle valve	(2)	B-85914	tank conn.	B-91467
Mana. check valve line mtg.	(2)	B-85917	Lee spring	(8) B-97765
			Bellofram diaphragm (Class 4C)	(8) B-94535

Bardons & Oliver, Inc. - Cleveland, Ohio U.S.A.

LOT 379 R

4A-2-P

B P & LEGS (Ref. P/L #9207)

B & O nameplate	A-76631	Bottom brace	(2)	A-91991
Bed	L-91699	Right support arm		A-91992
Bed - left leg	L-92055	Left support arm		A-91993
Bed - right leg	L-92056	Bracket		A-93406
Machine size plate	B-94738	Manifold bracket		A-93407
Pan	L-98130	Drip pan		A-97520
Pan - left leg	L-92116	Angle bracket		B-91938
Pan - right leg	L-92117	Top mounting bracket		A-91973
Head guard	L-91885	PV box brace		A-97526
Rear splash guard	L-91921	Guide block		B-92023
Main guard	L-91930	Spacer	(2)	B-92275
Front splash guard	L-91936	Window		A-88652
Tooling guard	L-91942	Knob	(4)	B-84088
Top cover	L-91948	Bushing		B-87518
Bedway	(2) A-91697	Strap	(2)	B-87696
Cover	A-91931	Spring clip	(2)	B-88194
Cover	A-91932	Cover		B-89382
Side guard	A-91933	Roller	(3)	B-89384
Chip chute	A-91945	Strap	(5)	B-90608
Rear guard	A-91949	Knob		B-90351
Hose manifold	A-91957	Coolant manifold		B-90491
PV box bracket	A-97521	Wear strip	(2)	B-91484
Mounting strap	A-91989	Washer	(2)	1067
Top brace	A-91990	Cover		A-95908
Hose guard	A-91982	Deflector		B-97389
Weatherstrip	B-97478	Jack Screw	(4)	B-92270
Spacer	B-89385	Cover		B-96573
Stop	B-94663	Rubber strip		B-96085
Plunger	B-94759	Bracket		B-96086
		Strip		B-96087
		P.V. box support		B-97499
		COLLET CHUCK COVER		L-97515

Hardons & Oliver, Inc. - Cleveland, Ohio U.S.A.

LOT 379 R

4A-3-P

HEAD (Ref. P/L #9136)

Bearing closer	(2)	A-86066	AS450 clutch hub	(2)	A-86937
Bearing closer		A-86067	AS600 clutch hub	(2)	A-86938
Spacer		B-86074	Spacer shim	(6)	B-88024
Spacer	(2)	B-86079	Spacer shim	(7)	B-88152
Spacer		B-86082	99T gear (Std. Spd.)		A-86828
Shaft		A-86083	93T gear (Spl. High Spd.)		A-86124
Spacer		B-86131	MRC bearing		B-91176
Spacer		B-86203	MRC bearing	(2)	B-91177
59T gear		A-86817	MRC bearing		B-91178
49T gear		A-86820	MRC bearing	(2)	B-91179
27T gear		A-86821	MRC bearing	(2)	B-91180
Pinion shaft		A-86831	MRC bearing	(2)	B-91181
61T clutch gear		A-86931	MRC bearing		B-91182
71T clutch gear		A-86932	MRC bearing		B-91183
71T clutch gear		A-86933	Fawick clutch with		
95T clutch gear		A-86934	B&O hub A-86937	(2)	B-91184
			Fawick clutch with		
			B&O hub A-86938	(2)	B-91185

Bardons & Oliver, Inc. - Cleveland, Ohio U.S.A.

LOT 379 R

4A-4-P

B

39/2000 RPM HEAD RANGE GEAR (Ref. P/L #9139)

37T gear	A-86826
Speed overlay	B-92233

30/1600 RPM HEAD RANGE GEAR (Ref. P/L #9138)

31T gear	A-86827
Speed overlay	B-92232

2 IN. SPINDLE (Ref. P/L #9137)

Head	L-91698	Brg. spacer	A-92214
Housing	L-91700	Spacer	A-92215
Housing cover	A-91986	Cover gasket	A-92022
Front brg. closer	A-92209	Fawick clutch with	
Rear brg. closer	A-92210	B & O hub A-86843	B-92489
Spindle	A-92211	Timken brg. cup	B-92490
Driving button	B-37291	Timken brg. cone	B-92491
Balancing ring	B-59612	Timken brg. cup	B-92492
Spindle gear nut	A-54658	Timken brg. cone	B-92493
Adj. nut	A-54659	MRC brg.	B-92494
AS700 clutch hub	A-86843		
Key	(2) B-86865		
Brg. retainer	(4) B-90220		
87T gear	A-92212		
48T gear	A-92213		

2 IN. COLLET CHUCK (Ref. P/L #7900)

Yoke bracket	A-86965	Wedge shoe	(2)	B-31983
Yoke	A-86966	Finger pivot pin	(2)	B-36830
Collet pads	A-36758	Finger holder friction	(2)	B-44274
Collet	A-42589	Wedge		B-62790
Finger holder	A-69767	Finger adj. ring		B-69765
Air cylinder	A-86982	Abutment sleeve		B-69766
Cyl. mtg. block	(2) A-86978	Plunger		B-86841
Yoke pivot	A-88847	Wedge shoe stud	(2)	B-86979
Collet hood	A-92103	Adj. sleeve extension		B-83823
Spindle guard	A-94276	Collet pad screw	(4)	C-1453
		Key		C-2214

COLLET CHUCK (Ref. P/L #7811)

Finger	(3)	A-70711	Actuator	B-87321
Finger roller	(3)	B-62784	Valve body	B-88334
Finger roller pin	(3)	B-62785	Valve closer	B-87529
Cyl. mtg. block	(2)	A-86980	Gasket	B-88335
Finger holder friction		B-44275	O-ring linear 11-009	
Pin	(3)	B-88239	O-ring linear 11-011	
Wedge shoe	(2)	B-74999	S-12547-010 Glyd. ring	B-87984
Cyl. link		B-86975	Reliance snap ring	B-71115
Yoke link pin		B-86976	Spring	B-52222
Lever		B-88845	Schrader - 2 pos., 4 way	
			air pilot- air valve	
			#52051-6000 with ext.	
			pilot	B-93544
			Arrow #ASP - 1SC Spd.	
			cont. muffler	(2) B-93689

Bardons & Oliver, Inc. - Cleveland, Ohio U.S.A.

LOT 379 R

4A-8-P

MOTOR DRIVE - LOUIS ALLIS (Ref. P/L #7901)

Motor plate	A-92228
Motor shaft	A-95700
18/9 HP motor	
Frame 256TD	
1800/900 RPM with	
B&O shaft A-95700	B-94187

TURRET & SADDLE (Ref. P/L #9131)

Curvic coupl. (lower)	A-86517	Brass shoe	(6)	B-89011
Curvic coupl. (upper)	A-86518	Spacer		B-87040
Yoke	A-86644	Key		B-87047
Adapter	A-86706	Valve closer		B-87249
Pipe bracket	A-92014	Gasket		B-88333
Brg. closer	B-88049	Cam lock	(7)	B-87317
Cartridge	B-88050	Actuator	(9)	B-87321
Yoke plate	A-92645	Spacer	(5)	B-87788
Pipe cover	A-88851	Stop screw clamp	(6)	B-87807
28T gear	A-86684	Clamp nut	(6)	B-87808
14T gear	A-86685	Dial	(6)	B-87890
Center post	A-86686	Spacer		B-92255
Valve block	A-87032	Spacer (2-green, 1-brown, 2-red)	(5)	B-88053
40T gear	A-87037	Spacer (2-green, 1-brown, 2-red)	(5)	B-88054
Valve disc	A-87042	Actuator		B-88055
Index cam plate	A-87219	Lock pin	(2)	B-88057
Valve body	A-87248	Guide pin		B-88058
Stop screw roll	A-94765	Key		B-88185
Index cam	A-87896	Gasket		B-88331
Ball bushing	(2) A-88056	Pin		B-88619
Spring	(9) B-52222	Bracket		B-88821
Valve spring	(3) B-45759	Feed arrow		B-42100
Spring	B-48009	Feed cam	(6)	B-87218
Hub	B-86687	Dog point S.S.S. No 4 & 5	(2)	B-88150
Cover	B-86689	Dog point S.S.S. No. 7	(3)	B-88150
Cam	B-86703	Oiler No 4 & 5	(2)	B-88151
Coupling	B-86707	Oiler No. 7	(3)	B-88151
Bushing	B-86996	S.S.S. No 4 & 5	(2)	B-88338
Bushing	B-86997	S.S.S. No 7	(3)	B-88338
20T gear	B-87038			
Gasket	A-89578			

Bardons & Oliver, Inc. - Cleveland, Ohio U.S.A.

4A-10-P

Sheet 1 of 2

LOT 379 R

TURRET & SADDLE (Ref. P/L #9131)

(Con't.)

Spacer		2303	McGill camroll brg.		
Plug	(11)	2397	No. CYR-1-1/2 in.	(2)	B-91216
Plug	(6)	2409	McGill heavy stud camroll		
Plug		2441	No. CFH-1-1/8 in.	(6)	B-91217
Washer	(6)	1060	Reliance snapping	(10)	B-71115
Char-lynn gerotor			M.R. Quad ring seal		
Orbit motor mtg.			(Minnesota Rubber)		B-94874
style - 4 hole flange			Glyd. ring No. S-12547-10	(9)	B-87984
Gerotor size 1-1/2 "			Truarc No. 5100-62		
tapped mtg. holes on			0-ring PRP-568-029		
port surfaces 0-rings			0-ring PRP 568-009	(9)	
ports No. C-5-M		B-88175	0-ring PRP 568-011	(10)	
Torrington self-alig. ball			0-ring PRP 568-124	(4)	
bushing-Series SF No. 10 SF 16		B-91210	0-ring PRP 568-012	(14)	
Torrington self-alig. ball			Schrader 2 pos. 4 way		
bushing-Series SF No. 17 F 28		B-91211	valve No. 52051-6000		
Timken brg. cup #2 prec.	(2)	B-91212	with external pilot		B-93544
Timken brg. cone #2 prec.	(2)	B-91213	Flodar flow control		
Bunting bushing C-67		B-91214	valve No. SV-8	(6)	B-91220

TURRET & SADDLE (Ref. P/L #9135)

Saddle	L-97749	Gib	(2)	B-92129
Hex turret	L-92057	Cap gib	(2)	B-92130
Valve bracket	A-92012	Rear cap	(2)	B-92131
End plate	A-97573	Gib screw	(2)	B-92132
Stop bracket	A-92122	Bushing		B-92173
Turret cover	B-96655	Bushing cover		B-92174
Thrust plate	L-97571	Frnt. cyl. mtg. blk.		B-92175
Chip guard	A-86683	Rear cyl. mtg. blk.		B-92176
Stem bracket	A-92177	Front cap	(2)	B-92216
34T gear	A-92178	Key		B-94523
68T gear	A-92179	Rod ext.		A-97574
Wiper cover	A-92180	I.D. bearing spacer		B-92249
Wiper	A-92181	O.D. bearing spacer		B-92250
Cylinder guard	A-92182	Actuator		B-92251
Top cover	A-92183	Brg. closer		B-92268
Cam plate	A-92184	Closer gasket		B-94329
Scale	A-97315	Valve gasket		B-94330
Shaft	A-97575	Bracket		B-94363
Hyd. motor manifold	A-92253	Spacer		1061
Valve stem	A-92254	Spacer	(6)	1071
Valve cover	A-92269	Hunt trimline valve		
Front cover	A-93602	4 way-No. P084-2003		
Binder bolt	(6) B-39857	Less actuator		B-91215
Spring	B-42975	Hyd. cyl. (2½ bore x		
Index stop	B-92123	15 in. stroke)		A-91488
Pivot pin	B-92124	Kaydon brg. No. KC040XP0		B-92248
Spring cover	B-92125	Clippard MJV-3NC air valve		B-94365
Valve body	B-92126	Clippard MBA-1 min. ball		B-94366
Valve closer	B-92127	actuator		
Stop screw	(6) B-86769	MRC bearing 103 KSZZG		B-94492
		O-ring PRP 568-010	(2)	
		O-ring PRP 568-110		

Bardons & Oliver, Inc. - Cleveland, Ohio U.S.A.

LOT 379 R

4A-11-P

2

RECIPROFEED ATT. (Ref. P/L #9246)

Spring		B-43713
Stop nut		B-83877
Rod bushing		B-83884
Piston		B-84986
Plunger cap		B-87602
Plunger		B-87603
Gasket		B-87785
Gasket		B-87786
Shoe	(2)	B-88140
Cyl. cap		B-88904
Cyl. mounting		B-88905
Brass shoe	(2)	
Chicago Rawide wiper ring		
Auto-Diesel butt joint piston		
ring 1-1/4 Dia. x 3/32W x		
1/16 wall		B-96820
Linear O-ring		
Dieco spring 5-031		B-97481

Bardons & Oliver, Inc. - Cleveland, Ohio U.S.A.

LOT 379 R

4A-12-P

2

RECIPROFEED ATT. (Ref. P/L #8211)

Feed signal block		A-92015
Spacer	(2)	B-92276
Piston rod		B-92277
Cylinder		B-92278
Bumper		B-92279

CROSS SLIDE & CARRIAGE (Ref. P/L #7898)

Carriage	L-94917	Carriage guard	A-94909
Cross slide	A-94882	Slide guard	A-94914
Front bracket	A-94884	Drive rod	B-94180
Cross slide gib	B-92283	14 tooth gear	(2) B-94181
Hyd. cylinder	A-91487	Support	B-94183
Rear bracket	A-92290	Collar	B-94184
Splash guard	A-92291	Thrust washer	B-94193
Cyl. guard	A-92293	Cover	(2) B-94397
Cyl. rod guard	A-92294	Guard block	B-94402
Cyl. block	A-92295	Valve bracket	A-87962
Hyd. cyl. rod	A-92298	Arrow	B-47044
Wiper	(2) A-92301	Pawl spring	(5) B-52222
Wiper cover	(2) A-92302	Gib screw	(2) B-58815
Rear cap	A-94890	Snap ring #309	(5) B-71115
Stop screw	(2) A-94899	Cam	B-94916
Cam plate	A-94904	Cam lock	(3) B-87317
Gib screw	(2) B-92132	Valve cover	B-87320
Front cap	B-92216	Actuator	(5) B-87321
Gib screw with B-96660	B-92284	Valve brkt. cover	B-87324
Brass shoe	B-92286	Retainer	B-87325
Spacer	B-92287	Manifold	B-87728
Stop	(2) B-92288	Carriage gib	(2) B-87969
Cap gib	(2) B-94891	Stop block	(2) B-87973
Cam positioner	(3) B-94894	Stop pin	(2) B-87974
Clamp cap	B-94897	Valve block	(2) B-87975
Nylon tip	B-96660	Glyd. ring	(5) B-87984
Park cam	B-94915	L.V. gasket	(2) B-88330
PIC Cat. #CS-21 5/16 S.S.S.		Dial	(3) B-87977
with nylon insert	B-95914	Dial cap	(5) B-87978
Brass shoe	(5) C-2252	Key	(5) B-87979
Screw #127	C-5362	Thrust washer	(5) B-87980
Adjustment block	A-94175	Spring housing	(2) B-87981
Drive tube	A-94176	Gasket	B-89179
Adj. rod	A-94177	Lee spring No.LC-063J-1-MW	(2) B-94923
Gear block	A-94178	Lee spring No.LC-072J-1-MW	(2) B-94924
Rod guard	A-94403	Jergens #43907 thumb screw	(2) B-94925

Bardons & Oliver, Inc. - Cleveland, Ohio U.S.A.

LOT 379 R

4A-14-P

B

COOLANT PUMP 1/2 HP (Ref. P/L #9386)

Pump pan	A-98119
Pump guard	A-98120
Cover	B-98121
Gusher motor driven coolant pump, Model 9050 - 1/2 HP, 230/460V, 3 phase, 60 cycle, impel. 6061-DW	B-97122
Hansen coupling socket #4-S27 Series ST	B-94564
Hansen coupling plug #B4-T26 Series ST	B-94565
Parker push-loc #30182-8-8 (1/2 x 1/2) (2)	
Parker hose #831-8, 6 ft.	
Parker swivel S2202-8-8 (1/2" NPT) (2)	B-97341

AUTOMATIC LUBRICATION (Ref. #7476)

Raychron CIIA cycle timer, 120V-60HZ, 2 pole, cycle time 1 hour, Min. timing 1 minute	B-91229
Allied solenoid valve 2 way N.C. 1/4 N.P.T., .125 orifice size conduit housing #20314	B-91230
Oilrite style SFN No. 1768	B-95313
Bijur junction 5 way single, B-3263	
Bijur junction 3 way tee, B-3494	
Bijur meter unit, B-1085 (FSA-2)	(2)
Bijur meter unit, B-1087 (FSA-4)	
Bijur meter unit, B-2497 (FJB-2)	
Bijur meter unit, B-2498 (FJB-3)	(2)
Bijur tubing clip, A-2435	
Bijur compression sleeve, B-1061	(16)
Bijur compression nut, B-1095	(4)
Bijur compression bushing, B-1371	(9)
Bijur elbow adapter, A-3080	

AUTOMATIC LUBRICATION (Ref. P/L #7476 Sheet 2 of 2)

Bijur junction 6 way single B-3264	
Bijur meter unit B-2497 (FJB-2)	(3)
Bijur elbow adapter A-3080	(6)
Bijur compression nut B-1095	(3)

CONSOLE

Console	L-88071	Northeast 2010 fluid amp valve	B-91244
Volume chamber	A-86478	Amp mounting strip	A-94325
Short connector (102)	B-89062	JAF 161 diameter amplifier (7)	B-94326
Function selector manifold (6)	A-84070	Dwyer manometer 1220-12	B-91425
Volume chamber cover	A-86479	Dwyer manometer 1220-24	B-91426
Volume chamber gasket	A-86480	Worthington Lid support	
Setup panel	L-87212	code 249-839 stock 432-3-10	B-91427
Guard	A-87659		
Shelf	A-87727		
Manual control panel	A-88091		
5 port manifold	A-88092		
Supply manifold panel	A-88093		
Diahrpagn amp. bracket	B-88809		
Fairchild Hiller pneumatic pressure regulator (5)	B-88094		
Model 30 No. 30122 o-10 psi 1/4 NPT			
Johnson Service Co. 52 gate supply manifold (4)	B-88095		
Setup panel gasket	A-88096		
Manual control panel gasket	A-88097		
Johnson Service FFM-14 5 port connector (30)	B-91264		
Johnson Service plastic tee FFT-65 (85)	B-91265		
Humphrey shuttle valve S125	B-91473		
Johnson Service fluidic diode FCD-401 (126)	B-91267		
Johnson Service FCO-120 (.012 orifice) (166)	B-91268		
Microswitch 11NF1-PG fluidic indicator (6)	B-91270		
Koby Senior king air filter	B-91094		
JOHNSON SERVICE #C-2220-600 FILTER (6)	B-95688		
Marsh type 1 pressure gage 2-1/2" dia 0-15 psi 1/8 NPT			
male bottom connection	B-88074		
Marsh type #1 pressure gage 2-1/2" dia 0 - 100 PSI -1/8 NPT			
male bottom connection	B-88075		

Cardons & Oliver, Inc. - Cleveland, Ohio U.S

LOT 379R

4A-18-P

PUSH BUTTON

PUSH BUTTON BODY

B-83033

3/8 D. x 1/16 THK. NEOPRENE DISC

USED WITH THE FOLLOWING

A.B. OPERATOR BUTTONS

A.B. BUL. 800T - CAT. #A2

A.B. BUL. 800T - CAT.#D6

A.B. BUL. 800T - CAT. #A2-N13

LOT 379 R

4A-19-P

SELECTOR ASSEMBLY

From Clippard

4-way air valve

Adapter

Operator

"L" fitting #15000-2

1/16 in. tube-spur connector (3)

or

1/8 in tube-spur connector (3)

B-97384

B-97385

B-97386

B-97419

4A-20-P

LOT 379 R

FUNCTION SELECTOR

Valve plug	B-85622	1/4 dia. steel ball	(2)	
Valve body	B-85623	Pitney-Bowes tube conn		#505-0002
Valve stem	B-85624	Linear O-ring		11-009
Pull knob	B-84088	Linear O-ring		11-111
MTG. nut	B-83874	Linear O-ring	(2)	11-112

LOT 379 R

4A-21-P

PULSE BUTTON

Pulse button cover	B-86011	5/8 dia.x1/16 thk. Neopreme Disc.
Pulse button body	B-86012	Norgren male tube conn. 1/16 ID
Diaphragm	B-86019	Lee spring LC-038E-10

Used with following A.B. operaror buttons

AB Bul 800T cat #A2 (2)

A.B. bul 800T A2-M13

4A-22-P

SAFEGONS & OLIVIER, INC. - CLEVELAND, OHIO U.S.A. LOT 379 R

TIME DELAY NEEDLE VALVE

Valve plug
Valve stem "std"
Valve body
Adaptor
Adjusting screw

B-91344
B-86459
B-86460
B-91328
B-91329

Washer
Rogan RB-51-1 knob
Lee LC-026-C-4 spring
O-ring - linear 11-111

1054

BARDONS & OLIVER, Inc. - CLEVELAND, Ohio U.S.A.

LOT 379 R

4A-23-P

AIR CONTROL PANEL

Supply manifold	A-85301
Wilkerson M20-02-000-1/4" Microalescer filter	B-91239
Wilkerson M30-04-000-1/2" Microalescer filter	B-91240
Wilkerson air filter with automatic drain and 5 micron element 1137-4F (2)	B-91241
Wilkerson Econo-mis lubricator 3002-E- 4-1/2 NPT	B-91242
Wilkerson pressure regulator 2001-4G 1/2 NPT 3 to 125 psi (3)	B-91243

Bardons & Oliver, Inc. - Cleveland, Ohio U.S.A.

LOT 379R

4A-24-P

PILOT VALVE MANIFOLD

Hoffman box AHE-24x12x6
Supply manifold

A-87166
A-87167

Northeast 2010 fluidic amp
valve (25) B-91244
Pilot valve manifold B-93507

BARDONS & OLIVER, Inc. - Cleveland, Ohio U.S.A.

LOT 379 R

4R-25-P

POWER VALVE MANIFOLD

Manifold
O-ring

(5) A-93542
568-012

Manifold cover

(3) B-93543

4A-26-P

VERTICAL SLIDE

Gib	B-87517	Dog	B-88137
Slide	A-88134	Adjusting screw - upper	B-88356
Bracket	L-88129	Shoe (2)	B-88357
LH Cap	A-88131	Decelerating valve	B-90000
RH cap	A-88132	Check valve	B-90001
LV body	A-90411	Body gasket	B-90415
Manifold	A-91833	Junction box	B-90424
Key	B-60489	Closer (2)	B-90895
Stop pin	B-84867	Stud nut	847
Hydraulic cylinder	B-85775	Adjusting nut	860
Stop block (2)	B-87370	Washer	2223
Adj. screw - lower	B-87371	Linear O-ring (2)	11-019
Dial marker	B-87372		
Connecting strip	B-88136		

CROSS SLIDE TOOL RELIEF

Block
Cylinder bracket
Cylinder
Stud

A-94195
A-94196
A-94197
B-94198

Continental VA12M-3F-A-10 air
piloted 3 position 4-way hydraulic
valve
Schrader air valve - manifold mounted B-93544
Schrader air valve - sub base mounted B-91457
Cinnard 2 position selector valve (3) B-94207

AIR POWER CHUCK (Ref. P/L #9227)

Adapter	A-85057
Cylinder guard	A-97661
Draw rod	A-97662
1/8x1-1/4 lg. roll pin	
10 inch 3 jaw chuck	
Model K2-300	
8 inch air rotating cyl.	
Model RM w/safety check valve	
Soft blank top jaws 10-K-325(1 set)	

Bardons & Oliver, Inc. - Cleveland, Ohio U.S.A.

LOT 379 R

4A-29-P

AIR POWER CHUCK CONTROL (Ref.P/L #9060)

Manifold		A-93405
Mounting plate		A-93911
Detend hub		B-93913
Caution plate		B-94301
Arrow muffler	(2)	B-90404
Barksale valve		B-93457
Bellofram air cyl.		B-93458
Marsh 0 to 160 gage		B-93461
Logan Tektro power valve		B-93462

AIR POWER CHUCK CONTROL (Ref. P/L #9225)

Side guard	A-93912
Cover	A-94426
Chuck tag	B-93914
Caution plate	B-93915

AIR RELAY SWITCH

Mounting plate
Clippard pilot sensor
and mounting bracket

B-93411

B-93412

Custom components pressure
switch - less limit switch
and terminal block B-93413

Bardons & Oliver, Inc. - Cleveland, Ohio U.S.A.

LOT 379 R

4A-32-P

Spindle Interlock

B-92502

Hunt 3-way P084-2001

B-91245

Cam

4A-33-P

Bardons & Oliver, Inc. - Cleveland, Ohio U.S.A. LOT 379 R

LIPE BAR FEED

Support arm	A-84536
Support arm extension	A-84537
Inner sleeve No. 2	A-95691
Inner sleeve No. 3	A-95692
Drip trough	A-95966
Rollway bar feed model 225 SL 2" cap. for 12' long stock	B-95578
Bushing - No. 1	A-102243
Bushing - No. 2	A-102244
Bushing - No. 3	A-102245

P/L No. 8927

4A-34-P

CHIP CONVEYER - MAYFRAN

Chip chute	L-96524
Cover	A-96525
Mayfran chip tote conveyer-Ref. dwg. #24451 A/O	

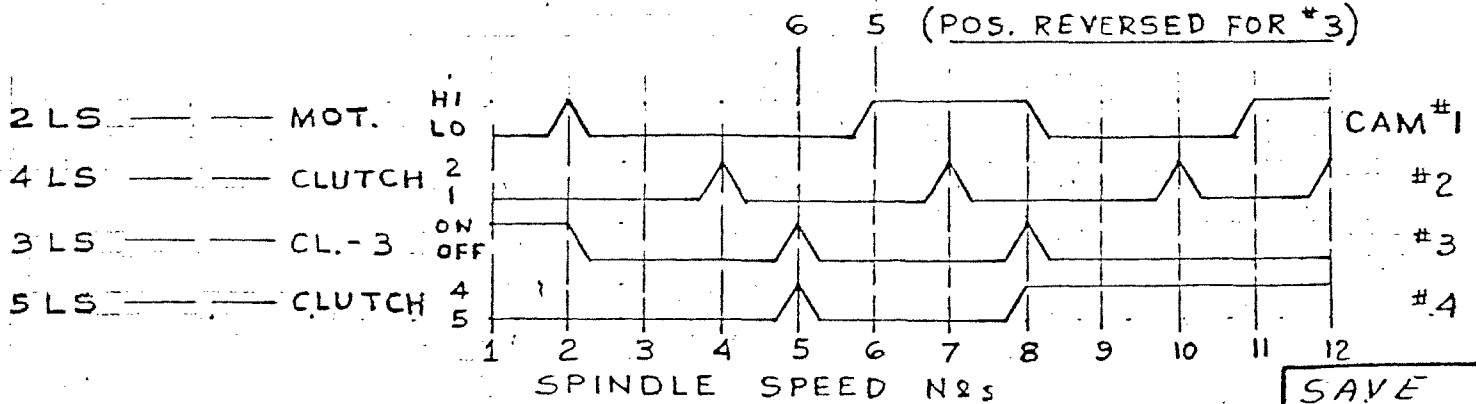
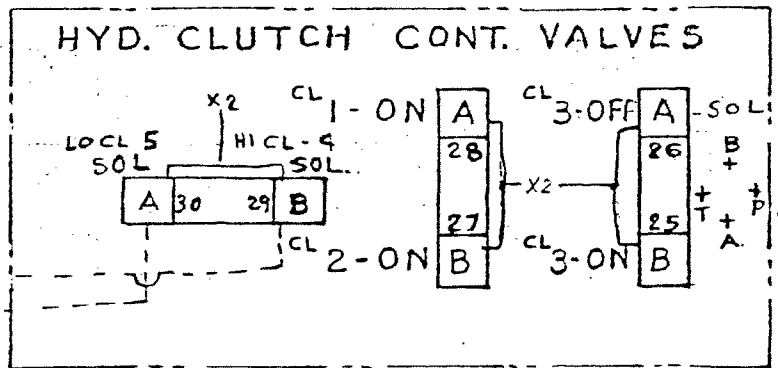
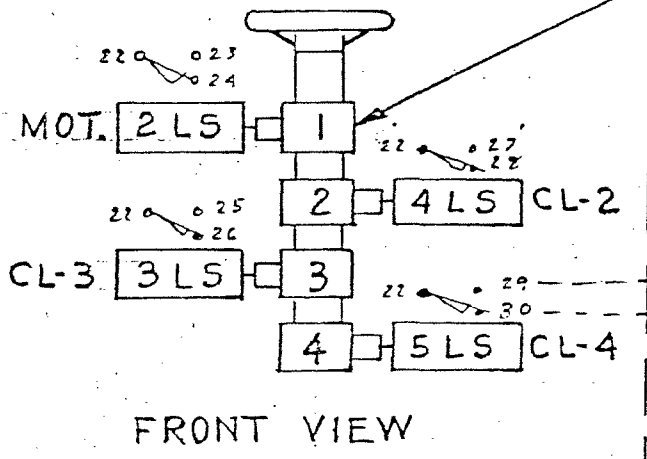
SPINDLE SPEEDS

NO. 6 UTL				NO. 3 UTL		No	MOT. HI/LO	CL. 2/1	CL. 3/1-2	CL. HI/LO
5" 3"	3" 5"	5" 3"	3" 5"	2" 2"	2" 2"					
25	30	31	37	30	39	1	L		3	L5
50	60	61	74	60	78	2	H		3	L5
73	88	90	108	90	115	3	L	1		L5
103	123	126	151	125	160	4	L	2		L5
115	158	141	193	195	245	5 6	L		3	H4
146	176	180	216	175	225	6 5	H	1		L5
206	246	253	303	250	315	7	H	2		L5
230	316	284	389	385	490	8	H		3	H4
338	464	414	568	570	720	9	L	1		H4
474	650	580	796	795	1000	10	L	2		H4
676	928	833	1142	1135	1440	11	H	1		H4
950	1300	1170	1600	1600	2000	12	H	2		H4

A-95869 A-95868 A-98020 A-98021 A-99868 A-99869

1 2 3 4
CAM No

PRE-SELECT UNIT



SAVE